



Bathing establishment Fact Sheet

Bathhouse name	ARETUSA
Address	Promenade 15
City	Marina di Pietrasanta (Lu)
Contacts	+39 3204930234 bagnoaretusa@libero.it
Website	Not detected

TESTED BY: [Handy Superabile - Social Promotion Association](#) in summer 2023

Please note The following information refers to the verification date shown at the bottom of each card. **The Association** is not responsible for any significant changes made by the property after the visit.

Summary

Bathing establishment Fact Sheet	1
Arrival at the facility.....	2
Private/public parking.....	2
Pathway from the parking lot to the main entrance	2
Reception.....	3
Bar/restaurant	4
Internal Pathways and common services.....	6
Internal Pathways	6
Toilet and shower accessible to guests with reduced mobility	6
Changing room	7
Beach.....	7
Children's play area	9
Swimming pool	9
Doctors' Offices/Healthcare Facilities	9

Project carried out with the contribution of the



Presidenza del
Consiglio dei Ministri
Ministro per la disabilità



Arrival at the facility

Private/public parking

Presence of private parking	YES
Presence of parking space reserved for people with disabilities	NO
Type of parking surface	GRAVEL
Public parking nearby	YES



Pathway from the parking lot to the main entrance

Pathway from the car park to the entrance	Flat
There are markers and tactile maps	NO
Usable door/entrance width	more than 90 cm






Reception

Umbrella booking system	<input type="checkbox"/> Via web <input checked="" type="checkbox"/> By phone <input checked="" type="checkbox"/> On-site
Presence of multilingual staff	YES
Presence of plant plan with key to services available	NO
Presence of visuo-tactile map	NO
Bulletin board/information panels at an average height of 130 cm in a well-lit area and font size at least 14 dpi with a contrast ratio greater than 4.5:1	NO
The staff attended training courses on welcoming people with different disabilities	NO





Bar/restaurant

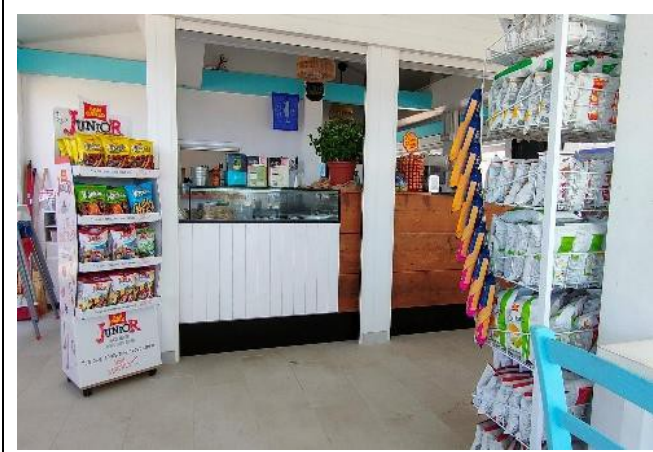
Type of venue	Snack bar
Access to the premises	Flat
Usable door/entrance width	more than 90 cm
Bar counter	height greater than 100 cm
Types of tables	4-legged
Space underneath the tables from the floor	67 cm
Multilingual menu	YES
Menus with large print fonts	YES
Braille menu	NO
Table service for people with disabilities	YES
Availability of gluten-free food	<input type="checkbox"/> bread <input type="checkbox"/> pasta <input type="checkbox"/> biscuits <input type="checkbox"/> ice cream <input checked="" type="checkbox"/> Pre-packaged foods
	



Project promoted by



Regione Toscana



Project carried out with the contribution of the



**Presidenza del
Consiglio dei Ministri**
Ministro per la disabilità



Internal Pathways and common services

Internal Pathways


<p>Indicate whether the pathways connecting the entrance to the beach are flat or with ramps in addition to those already described</p>	<p>Flat paths with a ramp 120 cm long, 170 cm wide and narrow with a gradient of 6.5 %</p>

Toilet and shower accessible to guests with reduced mobility

Number of toilets accessible/usable by guests with reduced mobility	1
Access to the premises	Flat
Usable width of the entrance door	88 cm
Toilet height	53 cm
Open front toilet seat	YES
Support handles	on both sides of the toilet
Flexible hand shower at the side of the toilet	NO
Free space on the sides of the toilet	left 85 cm right 83 cm





	frontal more than 90 cm
Electric doorbell/phone	YES
Washbasin with space underneath for wheelchair	68 cm
Height from the ground on the bottom edge of the mirror	Not detected
Baby changing table	NO
	
Accessible shower available for guests with reduced mobility	NO

Changing room

Accessible changing room available for guests with reduced mobility	NO
---	----

Beach

Type of beach	sand
---------------	------



Access to the beach	See internal Pathways section
Walkway to reach the umbrellas	YES
Type of walkway	concrete
Walkway width	90 cm
	
Removable Platform between the walkway and the umbrella station to facilitate the passage and parking wheelchair	YES
Amphibious beach chair available for helping people with reduced mobility to enjoy swimming (owned by the establishment or by association)	YES
	





Children's play area

Children's play area	missing
----------------------	---------

Swimming pool

The property has a swimming pool	NO
----------------------------------	----

Doctors' Offices/Healthcare Facilities

Hospitals near the facility	Ospedale Versilia SS1 Via Aurelia n. 335 55049 Lido di Camaiore LU Tel. 0584/6051
Other Healthcare Facilities	<p>Distretto Sanitario ASL 12 Pietrasanta Via Martiri S. Anna 11 Tel. 05846058823</p> <p>Croce Verde Via Risorgimento, 1 Forte dei Marmi Tel. 058484013 free dialysis and first aid service for white codes</p> <p>Emergency medical service Via Martiri S. Anna Tel. 0584 616774</p> <p>Misericordia Via Mazzini Pietrasanta Tel. 058470055</p> <p>Medical service "San Camillo" Nursing Home Via P.I. da Carrara, 37 Tel. 0584 7391</p> <p>Dialysis service c/o Croce Verde Viale Italico at the corner of Via Risorgimento Forte dei Marmi Tel. 058484013 affiliated with AUSL</p>

TESTED BY: [Handy Superabile Social Promotion Association](#) in summer 2023

